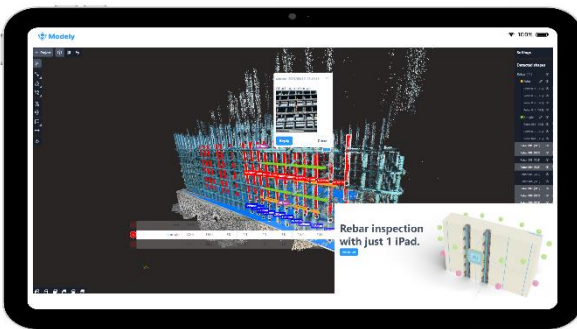


## Company Profile

|                 |  |              |   |
|-----------------|--|--------------|---|
| Name in Full :  | DataLabs, Inc.   | Head Office: | 8-6, Nihonbashi-kobunacho, Chuo-ku, Tokyo                       |
| Establishment : | February 7, 2020   | Telephone:   | +81-3-6810-8520   |
| Capital :       | 280,000,000 yen  | President :  | Daisuke TAJIRI  |
| Employees       | 22 (as of Jan. 2024)   | Website:     | <a href="https://www.datalabs.jp/">https://www.datalabs.jp/</a> |
| Clients         | Ministry of Land, Infrastructure, Transport, and Tourism, Nippon Expressway Company Limited (Central), Japan railway company (East, West, Central), Kajima Corporation, Obayashi Corporation, Shimizu corporation, Fujita corporation, and other large to small/medium construction companies throughout Japan |              |   |

## Providing Services

### Modely: 3D reinforcement inspection tool (all you need to bring is iPad!)

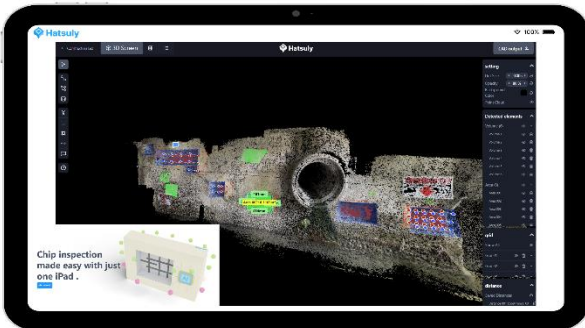


Automate reinforcement inspection with a single iPad!

Automatically generates 3D models from point cloud and completes everything from pass/fail evaluation of inspection items to the creation of inspection sheets.

By utilizing 3D data, multiple inspection items and complex reinforcement types such as circular hoop reinforcement can be handled.

### Hatsuly: 3D volume/depth calculator (all you need to bring is iPad!)



- Automated creation of reinforcement 3D models of existing structures.
- Automatic calculation of surface area of rebar and quantity of anti-corrosion material required.
- Automatic calculation of the amount of mortar required for backfilling after chipping and the depth of the chipping.

### Automatic 3D modeling: From point cloud to 3D CAD model, fully automatically, on cloud



- Point cloud data of infrastructures such as bridges or roads will be converted into 3D CAD models fully automatically.
- Since it's a web application, you won't need to prepare high-priced software or high-performance PCs.
- Simple yet rich UI/UX familiarizes you with the application, not requiring you to hire new personnel that are specialized in CAD-related tasks.

## contact person

Business Development Department / YUSUKE HOSHINO

E-mail: [yusuke.hoshino@datalabs.jp](mailto:yusuke.hoshino@datalabs.jp)