

# Pacific Consultants



## Company Profile

Name in Full :	PACIFIC CONSULTANTS CO., LTD.	Head Office:	Tokyo, Japan
Establishment :	1951	Telephone:	03-6777-3001 (Head Office)
Capital:	JPY 820 Mil. (Equiv. USD 5.5 Mil.)	President :	Osamu Omoto
Employees	2,282 (as of 2023.10.1)	Website:	<a href="https://www.pacific.co.jp/">https://www.pacific.co.jp/</a>
Clients	Japan International Cooperation Agency (JICA) Ministry of Land, Infrastructure, Transport and Tourism, Japan Ministry of the Environment, Japan Ministry of Internal Affairs and Communications, Japan Ministry of Defense, Japan New Energy and Industrial Technology Development Organization, Japan Asian Development Bank		

## Providing Services

PACIFIC CONSULTANTS is a leading construction consulting agency founded in 1951 with an aim to "contribute to the reconstruction of postwar Japan with technologies."

Since our establishment in 1951, PACIFIC CONSULTANTS has been playing the leading role in the construction consulting industry and growing together with our country, Japan. With the technologies and pioneering spirit from our previous generations, we would like to provide innovative values for our society and create the future.

### SUPPORT

- Hand in Hand with Our Clients, Our Society, and Our Future Generations

We grasp the problems and demands of our clients precisely and support them with streamlined, tailor-made service from proposal to execution with integrity. While working to ensure the comfort in people's lives, we add values to our business through, for instance, solving social issues and examining sustainability in true communication with our clients and the local community with a long-term perspective. Our mission is to protect our community and our earth - we tackle social issues such as energy and environmental problems, and calamities measures, etc.

### FUSION

- Integrative Know-Hows with Various Technologies to Pursue the Optimum

Under our boundaryless business culture, we are open to challenges in new businesses and imagination of added values. To achieve these goals, we need to have macro visions, unprecedented ideas, and actions for our projects. Regarding large and complex projects, we coordinate interests of stakeholders and accelerate cross-field collaboration. We pursue optimal solutions for problems at different time in an integrative manner.

### TECHNOLOGY

- Read Ahead by the Latest Technologies

For nearly 70 years, we have been working on planning, research, design, and maintenance of social infrastructure services. We have gained tremendous trust from our clients. With overwhelming technologies and knowledge developed in featured projects, our highly-qualified, professional team visualizes potential risks and provides effective solutions from multiple angles for all our clients.

## Project Achievement / Technical Expertise

### MIMM-R (Traveling measurement vehicle with AI)

By combining data measured by a traveling measurement vehicle with AI, we have developed AI that can estimate the occurrence of "deformations caused by external forces" in tunnels. The main points of the technology development are as follows.

- 1) The results obtained from deformation mode analysis based on MIMM-R measurement data and change extraction from lining photographs by AI are further processed by AI to understand the state of occurrence of external force-induced deformation.
- 2) Using the results of AI reasoning, it is possible to classify deformations necessary for diagnosis and support soundness diagnosis.
- 3) Enables determination of external force using objective judgment materials.

The MIMM-R is equipped with a high-resolution camera and various sensors to perform high-precision topographic and tunnel surveys and display the results in 3D images.

Based on the image results, it can detect cracks, leaks and deterioration of concrete and pavement, thickness of tunnel lining concrete and ground voids.

**High-precision laser (1 million points/sec.)**

**MMS SICK laser**

**MIS camera, platform(20 units)**

**Non contact radar : Type 1**

**Non contact radar : Type2**

**Lining thickness, void**

**Inner defect and honeycomb**

**Laser**

Laser survey result as point cloud data (left) and deformation mode contour plots (right).

Superimposed image (left) and damage map (right).

Thin thickness, void

Delamination, honeycomb

Actual void

Actual Thickness

Reflection signal

Surface delamination

Lining Surface

Distance (m)

TYPE 1

TYPE 2

1ch

2ch

## Project Management

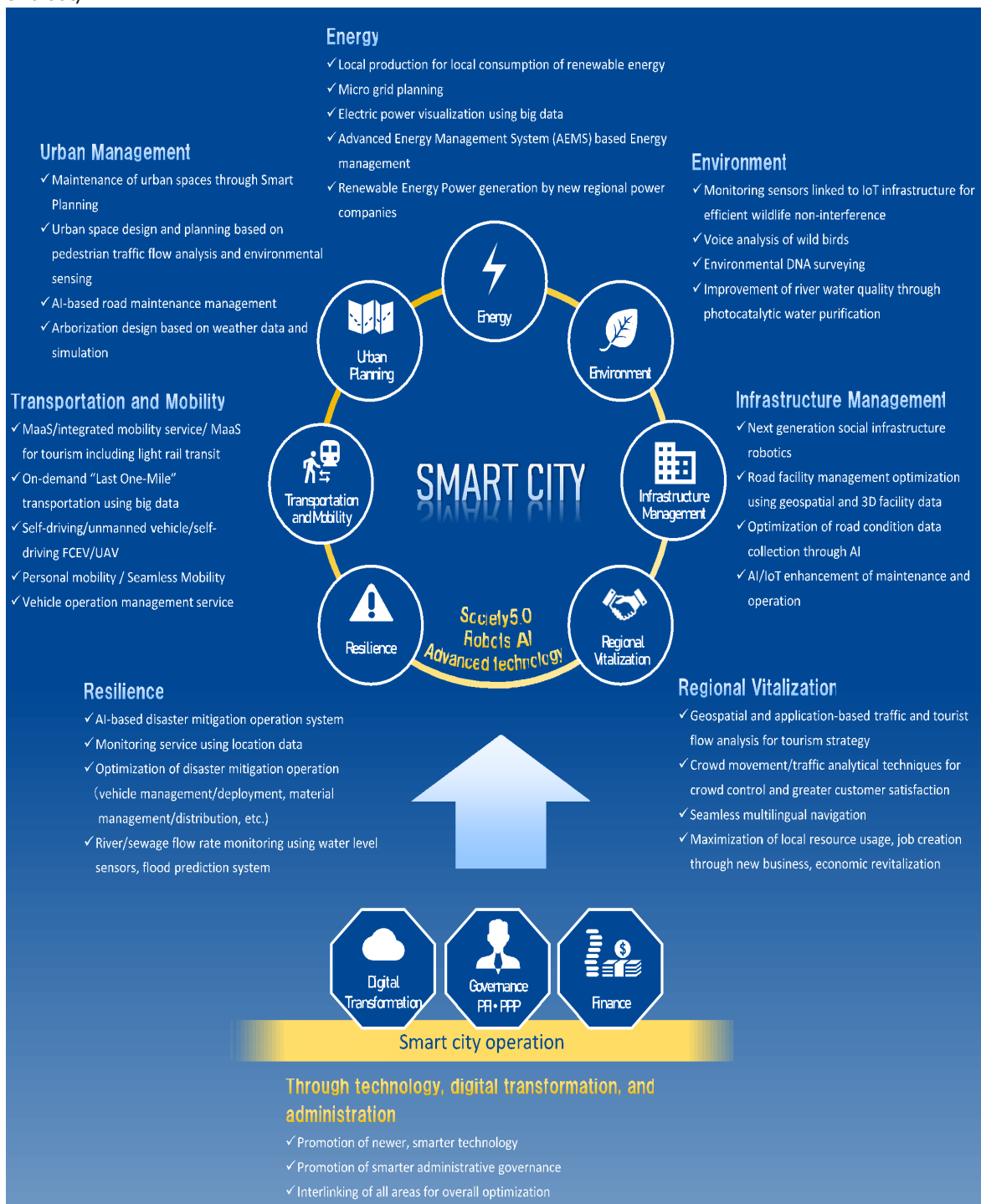
We have experience in coordinating diverse fields and stakeholders to advance projects in the redevelopment of Shibuya and Shiodome stations. Specifically, in order to integrate the diverse and complex urban development of infrastructure and architecture for transportation, commerce, offices and so on.

We participated in the steering committee and its formation, coordinated the requests of many stakeholders, and formulated plans. In addition, PCKK has extensive experience in TOD and smart city projects, including participation in the PPP (PFI) project for "Michino Eki Mutsuzawa," where PCKK provided not only planning, research and design, but also project operation and area management.

Utilizing these experiences, PCKK provides program, project, and operation management services for smart city development overseas, including Thailand, Malaysia, and China.

## Producing smart cities. Producing the future.

From here on, the future lies in the evolution of cities through the latest technology in ICT and AI. We support you in creating your smart city.



### Statistical data on the movement of people

This service is that uses location information obtained from cell phone base stations to provide statistically processed data on people's movements and stays.

By capturing the movements and routes of people, it can be used for analysis and study in various fields such as commercial real estate, tourism, transportation, and disaster prevention.

#### 【Features of this service】

- 1) **Comprehensiveness:** Nationwide data can be collected 24 hours a day, 365 days a year based on location information obtained from base stations.
- 2) **Functionality:** In addition to traditional areas such as population distribution and destinations, travel routes and means of transportation can be identified.
- 3) **Reliability:** High accuracy is achieved by fully anonymized location information of tens of millions of Softbank devices and statistical data correction.

#### 【Examples of services】

Mesh OD survey, OD survey of traffic facilities, Cross-sectional traffic survey, Population stay survey

Note: This service is provided by SoftBank Corp. based on joint development with our company.)

### Examples of Use

By capturing the movement and path of people, it can be used for analysis and study in various fields.

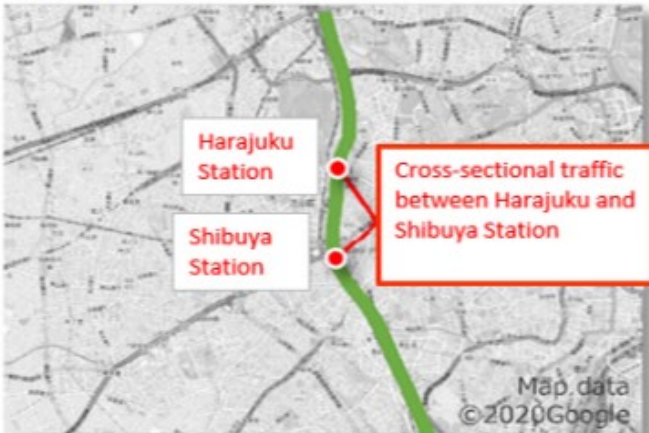
 <b>Commercial real estate</b> Trade area analysis of competing facilities etc.	 <b>Tourism</b> Measures against traffic congestion in tourist areas etc.	 <b>Transportation</b> Consideration of introducing a new transportation service	 <b>Disaster prevention</b> Review of evacuation plan etc.
---	---	---	--

↑ ↑ ↑ ↑

 **全国うごき統計**

### Cross-sectional traffic survey

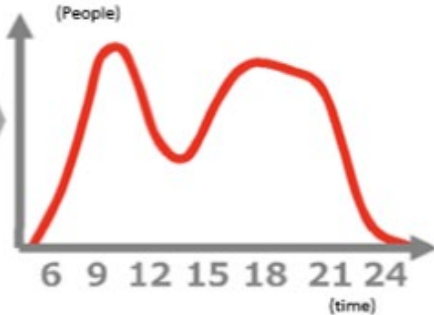
Provide cross-sectional traffic volume (transport volume) data between stations, highway interchanges, etc.



Map data ©2020 Google

**Cross-sectional traffic between Harajuku and Shibuya Station**

<Cross-sectional traffic>



(People)

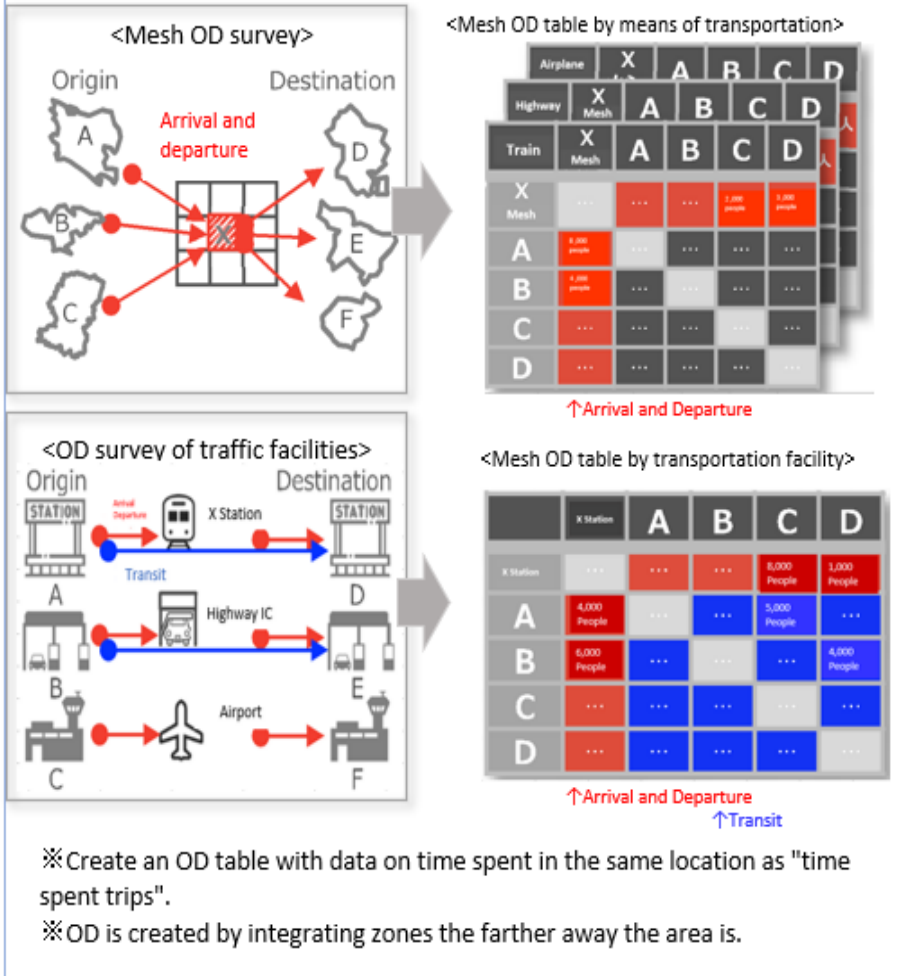
(time)

6 9 12 15 18 21 24



## OD survey

We provide OD data for specified mesh and transportation facilities.



## Option Menu

Provides aggregate data by attribute and time period



### contact person

Yasuo Kannami

Global Company

3-22, Kanda-Nishikicho, Chiyoda-ku, Tokyo 101-8462, Japan  
 TEL: +81-(0)3-6777-3723 / FAX: +81-(0)3-3296-0544  
 Yasuo.kannami@ss.pacific.co.jp