



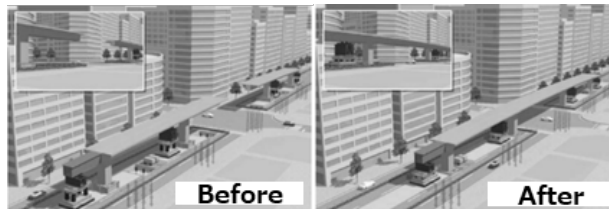
Company Profile

Name in Full :	JFE Engineering Corporation	Head Office:	Hibiya Kokusai Building, 2-2-3 Uchisaiwaicho, Chiyoda-ku, Tokyo, Japan
Establishment :	1912	Telephone:	+81 3-3539-7250
Capital :	100 M Yen	President :	Kazumi Fukuda
Employees		Website:	https://www.jfe-eng.co.jp/en/
Clients	Ministry of Land, Infrastructure, Transport and Tourism, Japan Department of Roads, Ministry of Public Works and Transport, Laos, Ministry of Higher Education & Highways, Democratic Socialist Republic of Sri Lanka Bangladesh Railway, Dedicated Freight Corridor Corporation of India Limited		

Providing Services

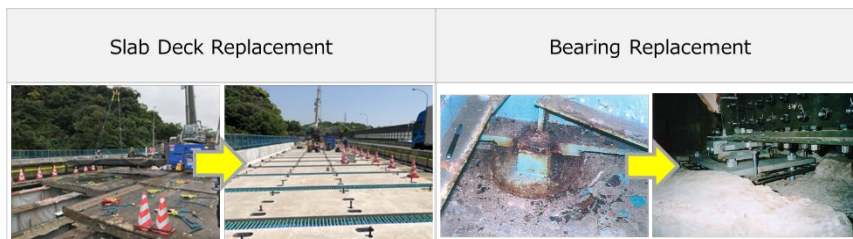
[1] Rapid construction

-Important Bridges in City Centre doesn't allow to stop its economical role for transportation.
 JFE contributes to making the construction period short to minimize the economic loss.



[2] Old bridge Improvement

-JFE's bridge improvement technology allows the government or municipality to (a)keep bridge sound, (b)save the cost and (c)utilize the existing structure without new land acquisition and resettlement.



[3] PPP

-The government and municipal budget are so limited to keep the essential infrastructure sound after 20-30 years from its construction. Private fund and user fee collection is the key to save the expenditure and maintain their availability though their life span.
 - JFE has invested 2 waste treatment plants though PPP in Viet Nam and Malaysia. JFE has been also surveying its feasibility in variety of developing countries though the study commissioned by Ministry of Land, Infrastructure, Transport and Tourism, Japan.

Project Achievement / Technical Expertise

-Track Record of steel bridges and structures including Laos



contact person

Yusuke Nakamura, Assistant Manager (Email: nakamura-yusuke@jfe-eng.co.jp)

コンタクト先：主査 中村祐介 E-mail:nakamura-yusuke@jfe-eng.co.jp