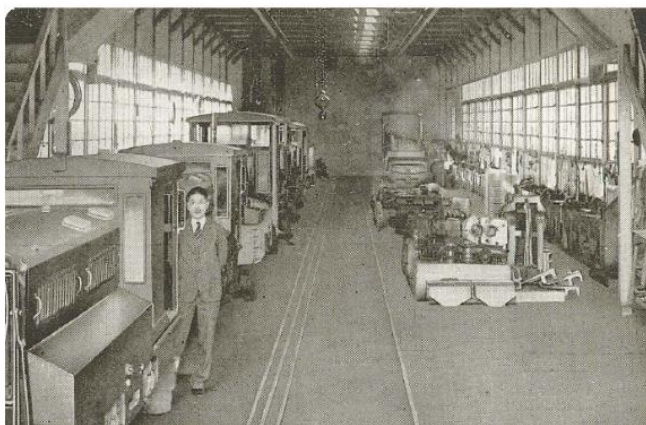


**SAKAI**  
**MASTERS OF COMPACTION**

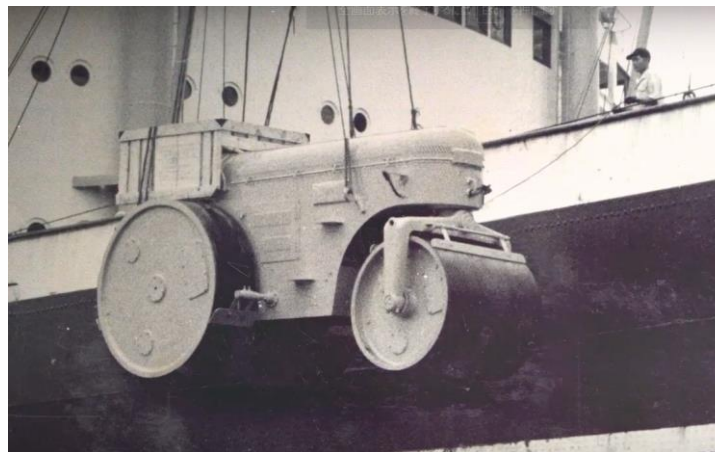
## 1918 Founded

we aimed of parts manufacturing for automobiles and steam locomotives.



## 1935 Overseas export

Exported to Thailand and stepped into the international market.



## 2024 106 years of history

Launched innovative machines, not only Road rollers but also Stabilizer, Road cutter etc.



# Technology of SAKAI



1

**Compaction Meister**  
Compaction Performance  
(Density) Control

**Quality UP**



2

**Autonomous  
Vibration Roller**

**Less Operator**



3

**Guardman**  
The emergency brake system

**Safety First**



4

**EV Drive Roller**

**Carbon Neutral**

## Smart city connection

Need to connect  
between Smart city  
and Smart city





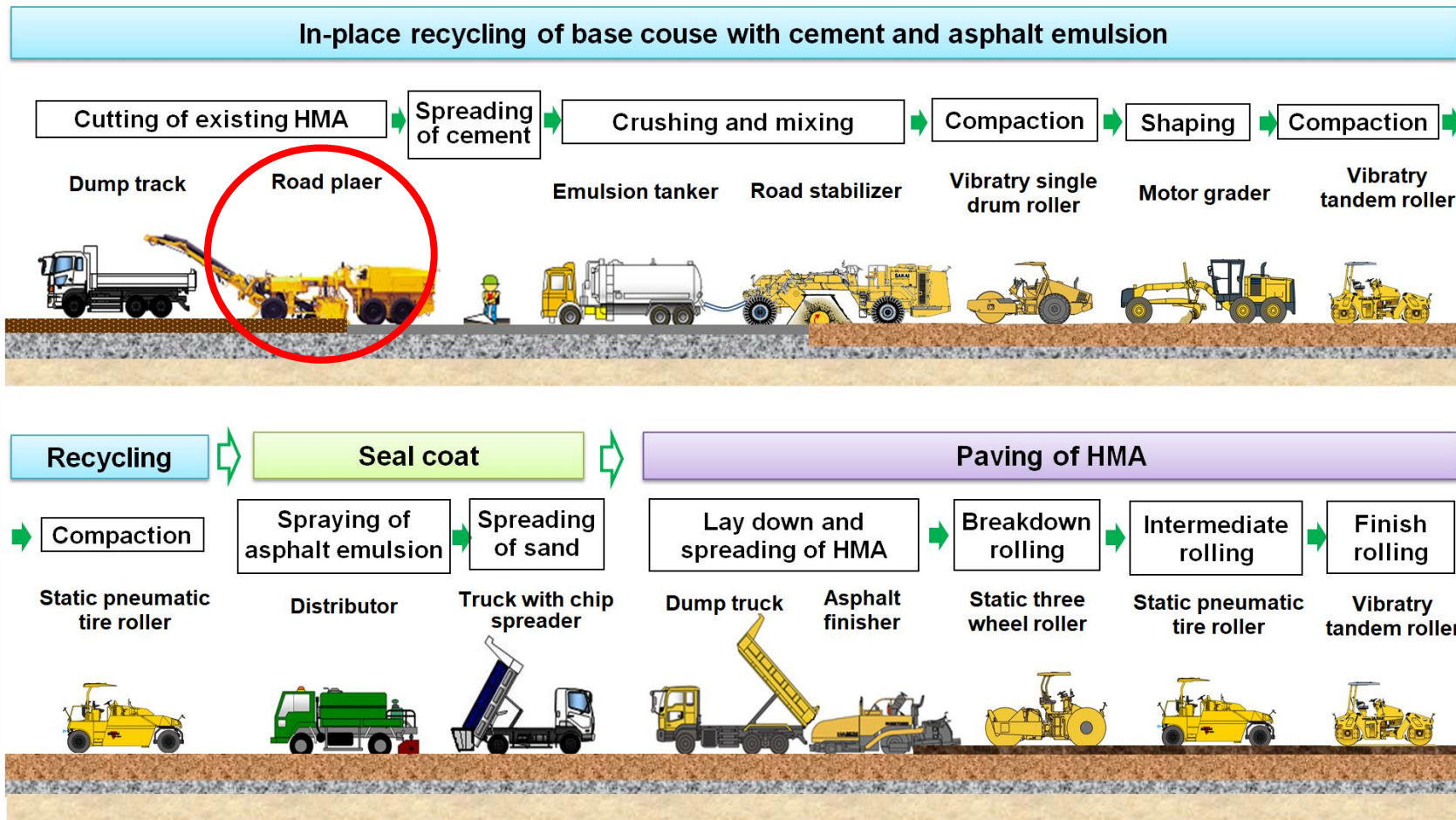
## Soil Stabilizer / Road Recycler



## Road Cutter / Milling Machine

# Typical Construction Process

## Additive: Cement + emulsified asphalt





## Conventional way of removing



Quite thick asphalt pavement  
Because of overlay



Braker

Make a hole with using a braker

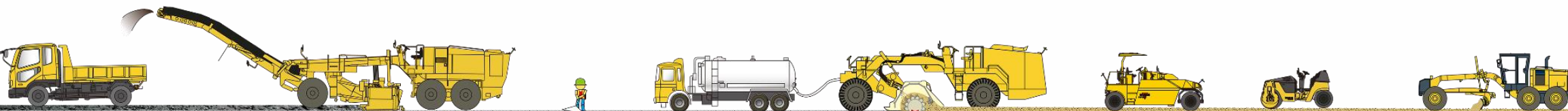
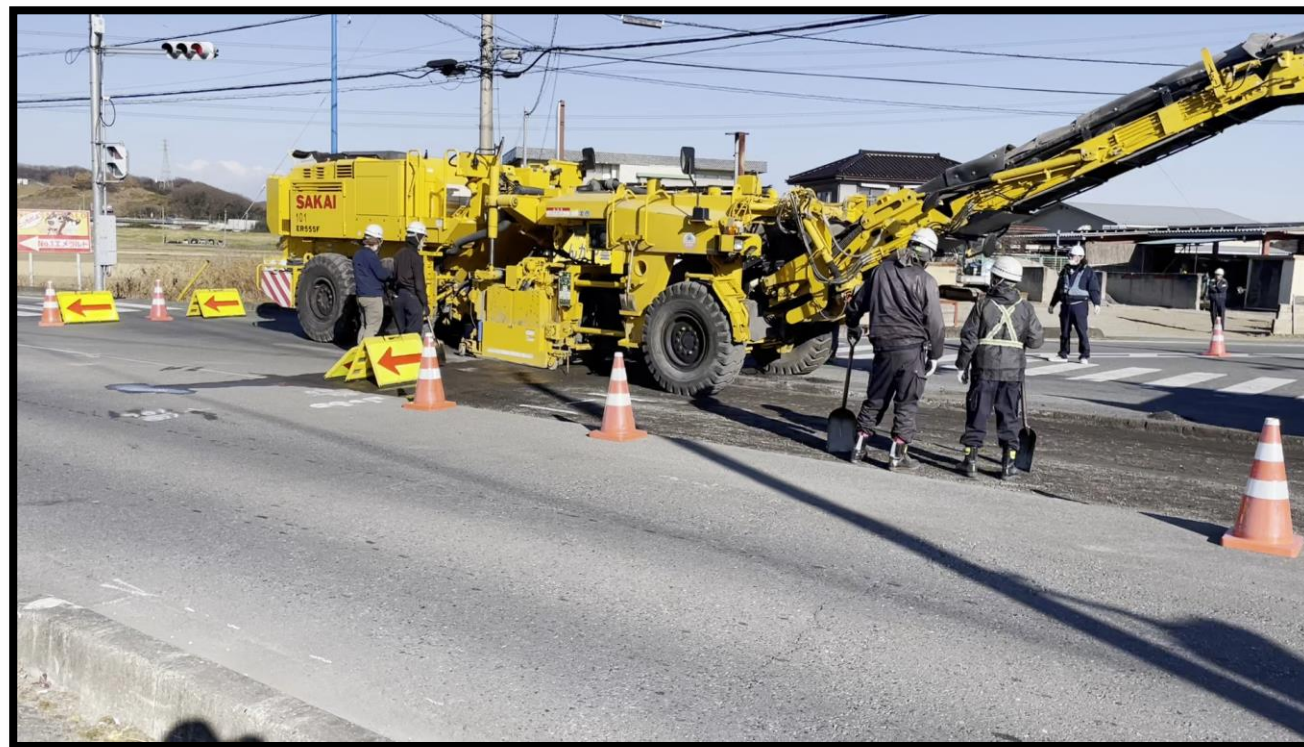


Excavator

Peel off with using a excavator



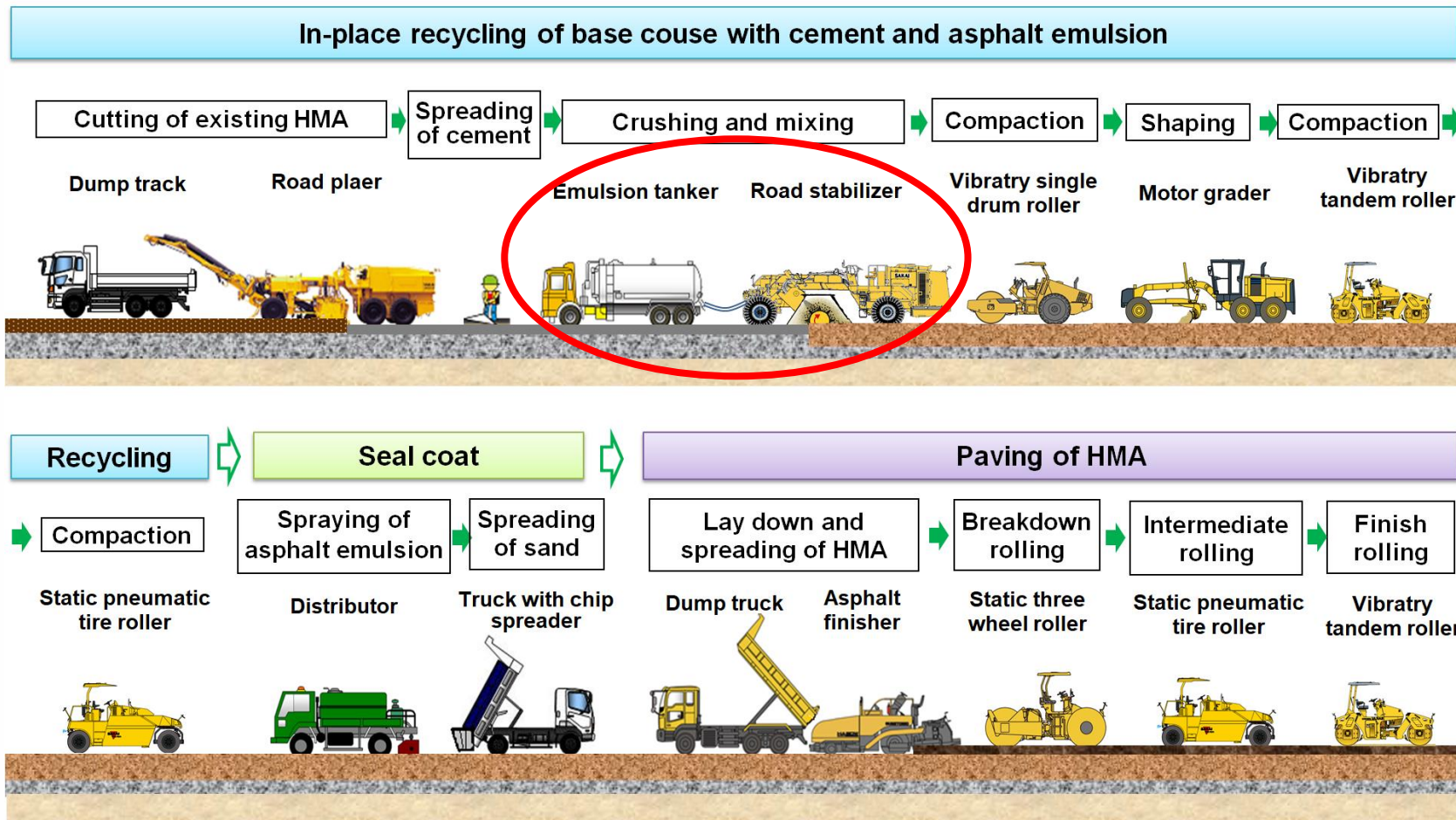
# What is Road Cutter





# Typical Construction Process

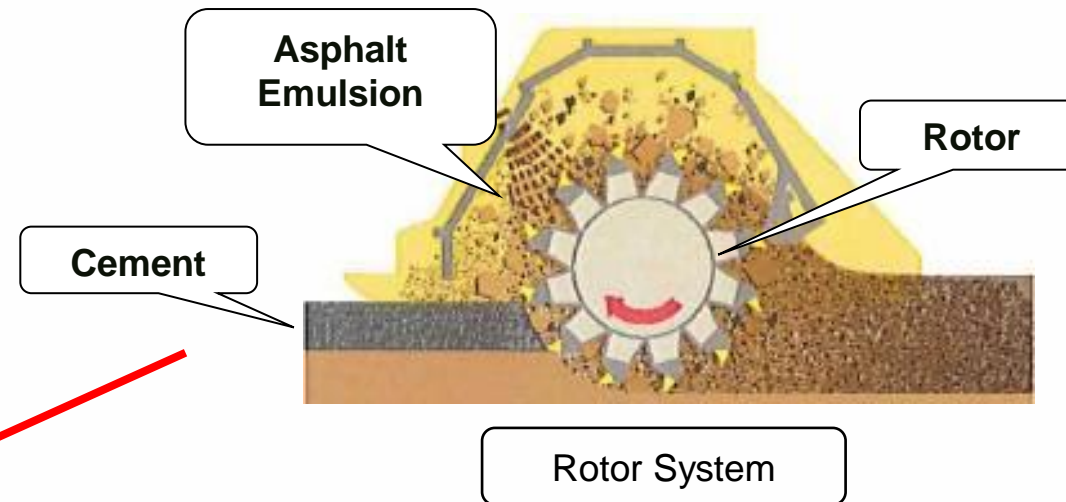
## Additive: Cement + emulsified asphalt



# Stabilizer Method



**PM550-s**





## 3 types of Stabilizer Method



**Soil Road**



**Granular Road**



**Damaged Paved Road**



# Work scenes of the road stabilizer.



Road Width : 5.5m  
Mixture Depth : 150 mm



# Life cycle cost estimation (simulation)

Case: Small maintenance cost/ necessary for **every 3 years** small maintenance

Years	0	3	6	9	12	15	18	21	24	27	30	33	36
Initial	40	40	40	40	40	40	40	40	40	40	40	40	40
Total	40	80	120	160	200	240	280	320	360	400	440	480	520

Case: One maintenance by Stabilizer **every 15 years**

Years	0	3	6	9	12	15	18	21	24	27	30	33	36
Initial	100	0	0	0	0	100	0	0	0	0	100	0	0
Total	100	100	100	100	100	200	200	200	200	200	300	300	300

Save the total points

Including all cost



## Technical Transfer

- **Classroom and Operation training**

Training of engineer and operator

- **Structural and Mix Design at Laboratory**

Based on the country's design method  
Testing method design procedure

- **Construction Procedure on site**

Training of engineer and operator





## Conclusion

### **SAKAI Maintenance machine is available for**

- +Construct with good condition and long life road
- +Maintenance of damaged asphalt paved road
- +Road management with road maintenance technology transfer by  
special training
- +Construction cost reductions expected

***Roads must be built.***

***Worlds must be connected.***

**Thank you for your attention**